

# Structural Radiata Products

SG10						
TYPICAL USE	TREATMENTS	CONDITION	SIZE	FINISH SIZE	LENGTH (m)	PIECES
Truss	BH1.2	KD GGD	100 x 50	90 x 45	3.6, 4.2, 4.8, 5.4, 6.0	143
			150 x 50	140 x 45	4.8, 5.4, 6.0	91
			200 x 50	190x45	4.8, 5.4, 6.0	65

SG8						
Frame or Truss	BH1.2, MH3.2	KD GGD	75 x 50	70 x 45	3.6, 4.2, 4.8, 5.4, 6.0	182
			100 x 50	90 x 45		143
			150 x 50	140 x 45		91
			200 x 50	190 x 45		65
			250 x 50	240 x 45	4.2, 4.8, 5.4, 6.0	52
			300 x 50	290 x 45	4.8, 5.4, 6.0	39
			100 x 50	90 x 45	CTL Studs	143
			150 x 40	140 x 35	4.8, 5.4, 6.0	112

SG6						
Frame	BH1.2	KD GGD	75 x 50	70 x 45	4.8, 5.4, 6.0	182
			100 x 50	90 x 45	4.8, 5.4, 6.0, CTL Studs	143

SIZES							
Call Size	75 x 50	100 x 50	150 x 40	150 x 50	200 x 50	250 x 50	300 x 50
IMP Call Size	3 x 2	4 x 2	6 x 1-1/2	6 x 2	8 x 2	10 x 2	12 x 2
GGD Size	70 x 45	90 x 45	140 x 35	140 x 45	190 x 45	240 x 45	290 x 45



## Structural Radiata Products

LINEAL/m <sup>3</sup> PER PACKET										
	3.6		4.2		4.8		5.4		6.0	
SIZE	lin	m <sup>3</sup>	lin	m <sup>3</sup>	lin	m <sup>3</sup>	lin	m <sup>3</sup>	lin	m <sup>3</sup>
75 x 50	655.2	2.457	764.4	2.867	873.6	3.276	982.8	3.686	1092.0	4.095
100 x 50	514.8	2.574	600.6	3.003	686.4	3.432	772.2	3.861	858.0	4.290
150 x 40	403.2	2.419	470.4	2.822	537.6	3.226	604.8	3.629	672.0	4.032
150 x 50	327.6	2.457	382.2	2.867	436.8	3.276	491.4	3.686	546.0	4.095
200 x 50	234.0	2.340	273.0	2.730	312.0	3.120	351.0	3.510	390.0	3.900
250 x 50	187.2	2.340	218.4	2.730	249.6	3.120	280.8	3.510	312.0	3.900
300 x 50	140.4	2.106	163.8	2.457	187.2	2.808	210.6	3.159	234.0	3.510

## Structural Douglas Fir Products

DFSG8						
TYPICAL USE	TREATMENTS	CONDITION	SIZE	FINISH SIZE	LENGTH (m)	PIECES
Frame or Truss	BH1.2,	KD GGD	100 x 50	90 x 45	3.6, 4.2, 4.8, 5.4, 6.0	132
			100 x 50	90 x 45	CTL Studs	132
			150 x 50	140 x 45	4.8, 5.4, 6.0	84

LINEAL/m <sup>3</sup> PER PACKET										
	3.6		4.2		4.8		5.4		6.0	
SIZE	lin	m <sup>3</sup>	lin	m <sup>3</sup>	lin	m <sup>3</sup>	lin	m <sup>3</sup>	lin	m <sup>3</sup>
75x50	604.8	2.268	705.6	2.646	806.4	3.024	907.2	3.400	1008.0	3.780
100x50	475.2	2.376	554.4	2.772	633.6	3.168	712.8	3.564	792.0	3.960



# Outdoor Products

MSG8 TW						
TYPICAL USE	TREATMENTS	CONDITION	SIZE	FINISH SIZE	LENGTH (m)	PIECES
Exterior Construction	MH3.2	TW GGD	75 x 50	70 x 45	4.8, 5.4, 6.0	126
			100 x 50	90 x 45		99
			150 x 50	140 x 45	3.6, 4.2, 4.8, 5.4, 6.0	63
			200 x 50	190 x 45	3.6, 4.2, 4.8, 5.4, 6.0	45
			250 x 50	240 x 45	4.8, 5.4, 6.0	36
			300 x 50	290 x 45		27

RAILS						
Fencing	MH3.2	TW RS	75 x 50		4.8, 6.0	104
			100 x 50			80
	MH3.2/MH4		150 x 40			63

No.2 FRAME						
Ground Contact	MH4	TW RS	150 X 40		4.8, 6.0	63
			150 x 50			56
			200 x 50			40

RETAINING TGV						
Retaining Wall	MH4	TW TGV	150 x 50	135 x 42	4.2, 4.8, 5.4, 6.0	63
			200 x 50	185 x 42		45

# Outdoor Products

## LINEAL/m<sup>3</sup> PER PACKET FOR OUTDOOR PRODUCTS

SG8 GGD										
	3.6		4.2		4.8		5.4		6.0	
SIZE	lin	m <sup>3</sup>	lin	m <sup>3</sup>	lin	m <sup>3</sup>	lin	m <sup>3</sup>	lin	m <sup>3</sup>
75x50	-	-	-	-	604.8	2.268	680.4	2.551	756.0	2.835
100x50	-	-	-	-	475.2	2.376	534.6	2.673	594.0	2.970
150x50	226.8	1.701	264.6	1.986	302.4	2.268	340.2	2.552	378.0	2.835
200x50	162.0	1.620	189.0	1.890	216.0	2.160	243.0	2.430	270.0	2.700
250x50	129.6	1.620	151.2	1.890	172.8	2.160	194.4	2.430	216.0	2.700
300x50	97.2	1.459	113.4	1.703	129.6	1.946	145.8	2.189	162.0	2.432

No.2 FRAME RS				
	4.8		6.0	
SIZE	lin	m <sup>3</sup>	lin	m <sup>3</sup>
150x50	268.8	2.017	336.0	2.521
200x50	192.0	1.920	240.0	2.400
150x40	302.4	1.814	378.0	2.268

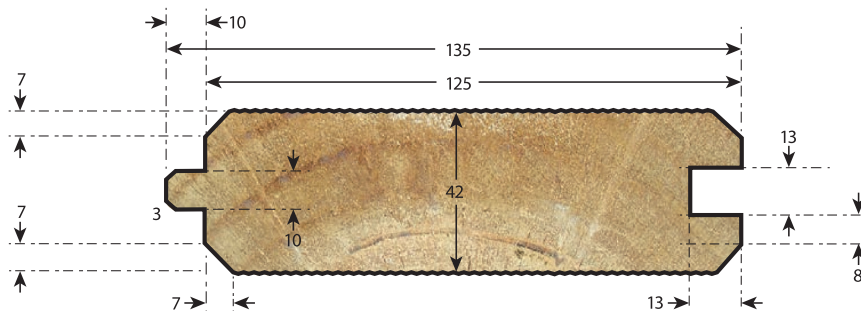
RAILS RS				
	4.8		6.0	
SIZE	lin	m <sup>3</sup>	lin	m <sup>3</sup>
75x50	499.2	1.872	624.0	2.340
100x50	384.0	1.920	480.0	2.400
150x40	302.4	1.814	378.0	2.268

RETAINING TGV								
	4.2		4.8		5.4		6.0	
SIZE	lin	m <sup>3</sup>	lin	m <sup>3</sup>	lin	m <sup>3</sup>	lin	m <sup>3</sup>
150x50	264.6	1.985	302.4	2.268	340.2	2.551	378.0	2.836
200x50	189.0	1.890	216.0	2.160	243.0	2.430	270.0	2.700

# Outdoor Products

TYPICAL USE	TREATMENTS	CONDITION	SIZE	FINISH SIZE	LENGTH	PIECES
<b>PREMIUM DECKING</b>						
Decking	MH3.2	TW Smooth, Grip Tread	100x25	90x21	RL	200
	MH3.2		100x40	88x32	RL	130
	MH3.2		150x40	140x32	RL	91
<b>MERCH</b>						
Ground contact	MH4	TW/RS	100x25		4.8,5.4,6.0	120
	MH4	TW/RS	150x25		4.8,5.4,6.0	84
	MH4	TW/RS	200x25		4.8,5.4,6.0	60
<b>REMAN</b>						
Formwork and Boxing	UT	AD/RS	100x25		RL	253
	UT	KD/GGD	100x50	90x45	4.8, 5.4, 6.0	143/165
	UT	KD/GGD	150x50	140x45	4.8, 5.4, 6.0	105
<b>INDUSTRIAL</b>						
Formwork & Boxing	UT	AD/RS	150x25		4.8,5.4,6.0	140
	UT	AD/RS	200x25		4.8,5.4,6.0	100
<b>POSTS AND PALINGS</b>						
Post	MH4	TW/RS	100x100		1.8, 2.1, 2.4, 2.7, 3.0	40
Paling	MH3.2	TW/RS	150x25		1.2, 1.5, 1.8	210

## 150 x 50 TG & V Profile



# Decking Profiles

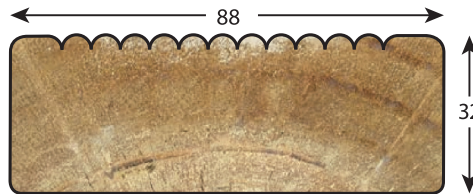
## 100x25 STD Grip Tread

**Finish size = 88 x 21mm**  
 11 x 3mm R with Flats.  
 4mm pencil rounds



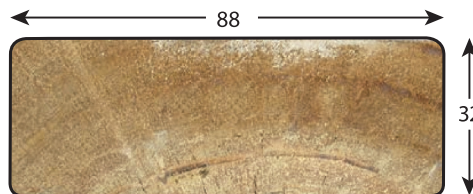
## 100x40 STD Grip Tread

**Finish size = 88 x 32mm**  
 11 x 3mm R with Flats.  
 4mm pencil rounds



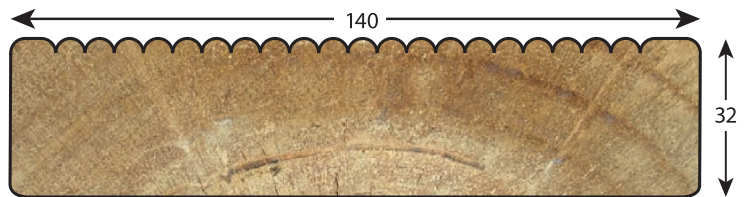
## 100x40 Smooth

**Finish size = 88 x 32mm**  
 4mm pencil rounds



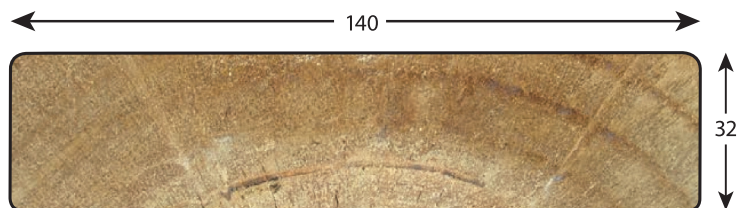
## 150x40 Grip Tread

**Finish size = 140 x 32mm**  
 20 x 3mm R with Flats.  
 4mm pencil rounds

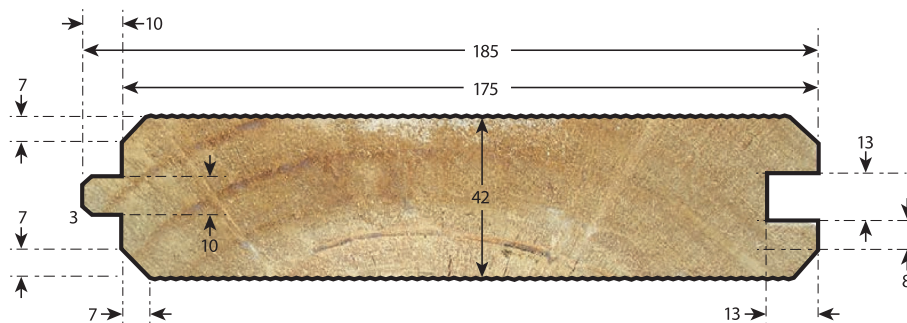


## 150x40 Smooth

**Finish size = 140 x 32mm**  
 4mm pencil rounds



# 200 x 50 TG & V Profile



# Non-Structural Products

FINGERJOINT STRAPPING						
TYPICAL USE	TREATMENTS	CONDITION	SIZE	FINISH SIZE	LENGTH (m)	PIECES
Fingerjoint Strapping	BH1.2	KD GGD	75 x 40	70 x 35	5.4	224
			150 x 40	140 x 35		112
SOLID STRAPPING						
Solid Strapping	BH1.2	KD GGD	75 x 40	70 x 35	RL	224
			150 x 40	140 x 35		112
FJ CAVITY BATTEN						
Cavity Batten	LH3.1	KD GGD	50 x 25	45 x 20	5.4	528
TILE BATTEN						
Tile Batten	BH1.2	GD RS	50 x 40	50 x 40	5.4/6.0	247
			50 x 50	50 x 50		190

## Estimated Weight per Packet KD GGD (Tonne)

	3.6	4.2	4.8	5.4	6.0
75 x 50	1.2	1.4	1.6	1.8	2.0
100 x 50	1.3	1.5	1.7	1.9	2.1
150 x 50	1.2	1.4	1.6	1.8	2.0
200 x 50	1.2	1.4	1.6	1.8	2.0
250 x 50	1.2	1.4	1.6	1.8	2.0
300 x 50	1.0	1.2	1.4	1.6	1.8

## Estimated Weight per Packet TW GGD (Tonne)

	3.6	4.2	4.8	5.4	6.0
75 x 50	-	-	2.3	2.6	2.8
100 x 50	-	-	2.4	2.7	3.0
150 x 50	1.7	2.0	2.3	2.6	2.8
200 x 50	1.6	1.9	2.2	2.4	2.7
250 x 50	1.6	1.9	2.2	2.4	2.7
300 x 50	1.4	1.7	1.9	2.2	2.4

## Common Abbreviations

Red Stag Timber Abbreviations	Common Industry Terms
<b>TIMBER SPECIES</b>	
RAD	Radiata
DF	Douglas Fir, NZ Oregon
<b>DRYNESS</b>	
KD	Kiln Dried
GD	Green Dipped, Unseasoned, Green Sawn
TW	Treated Wet, Wet after treatment
AD	Air Dried
<b>FINISH</b>	
GGD	Gauged Dry Size, Planner Gauged, Machine Gauged
RS	Rough Sawn
TGV	Tongue, Groove and 'V'
RH	Rougher Header
SM	Smooth
GP2	GripTread
<b>LENGTHS</b>	
RL	Random Length
SL	Select Length
CTL	Cut to Length
PET	Precision End Trim
<b>GRADES</b>	
SG10	MSG10
SG8	MSG8, VSG8
SG6	MSG6
STRAPPING	Ceiling Batten, Merch
FJ	Finger-Joint

## Conversion Table

SIZE	lin per m <sup>3</sup>	m <sup>3</sup> per lin
50 x 25	800.00	0.001250
75 x 25	533.33	0.001875
100 x 25	400.00	0.002500
150 x 25	266.66	0.003750
200 x 25	200.00	0.005000
250 x 25	160.00	0.006250
300 x 25	133.33	0.007500

SIZE	lin per m <sup>3</sup>	m <sup>3</sup> per lin
50 x 32	625.00	0.001600
75 x 32	416.67	0.002400
100 x 32	312.50	0.003200
150 x 32	208.33	0.004800
200 x 32	156.25	0.006400
250 x 32	125.00	0.008000
300 x 32	104.17	0.009600

SIZE	lin per m <sup>3</sup>	m <sup>3</sup> per lin
50 x 40	500.00	0.002000
75 x 40	333.33	0.003000
100 x 40	250.00	0.004000
150 x 40	166.66	0.006000
200 x 40	125.00	0.008000
250 x 40	100.00	0.010000
300 x 40	83.33	0.012000

SIZE	lin per m <sup>3</sup>	m <sup>3</sup> per lin
50 x 50	400.00	0.002500
75 x 50	266.67	0.003750
100 x 50	200.00	0.005000
150 x 50	133.33	0.007500
200 x 50	100.00	0.010000
250 x 50	80.00	0.012500
300 x 50	66.67	0.015000